

State of Wyoming Corner Record

(In compliance with the *CORNER PERPETUATION AND FILING ACT*, Wyoming Statutes, 1977, Section 36-11-101, et. seq., and the Rules and Regulations of the Board of Registration for Professional Engineers and Professional Land Surveyors)

Reverse side of this form may be used if more space is needed.

Record of original survey and citation of source of historical information (if corner is lost or obliterated). Description of corner monumentation evidence found and/or monument and accessories established to perpetuate the location of this corner. Sketch of relative location of monument, accessories, and reference points with course and distance to adjacent corner(s) (if determined in this survey). Method and rationale for reestablishment of lost or obliterated corner.

NO EVIDENCE FOUND.

Set 3 1/4" aluminum cap on #5 rebar 24" long. Cap sets 6" below road surface.

No reference points set.

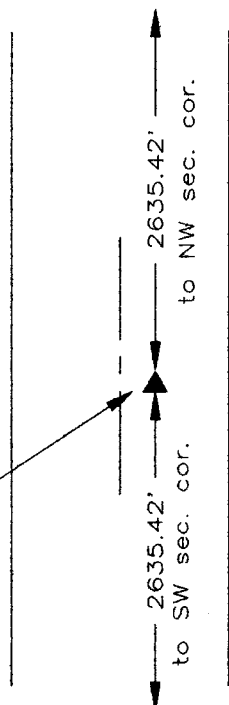
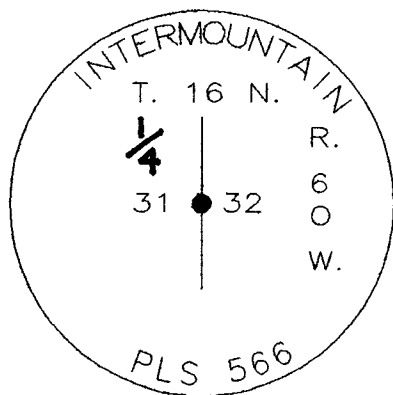
GLO Record: Sandstone (17" x 12" x 4")

NOTE: SEE RECORDS OF SURVEY SEC 32, T. 16N, R. 60W

FOR CONTROL USED AND ADDITIONAL INFORMATION

LARAMIE COUNTY CLERK
 CHEYENNE, WY.
 '95 JUN 16 PM 3 17
 163817

Cap falls 4' East of centerline of C.R. 161.



Date of Field Work: JUNE 29, 1994 Office Reference: 2747

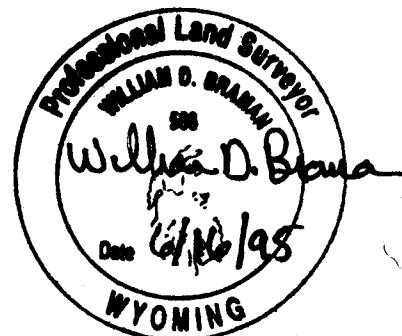
CROSS INDEX DIAGRAM

	1	2	3	4	5	6	7	8	9	10	11	12	13	14	15	16	17	18	19	20	21	22	23	24	25
A																									
B																									
C			6		5			4				3			2					1					
D																									
E																									
F																									
G			7		8		9			10			11			12									
H																									
J																									
K																									
L			13		17		16			15			14			13									
M																									
N																									
O																									
P			19		20		21			22			23			24									
Q																									
R																									
S																									
T			29		28		27			26			25												
U																									
V																									
W																									
X			31		32		33			34			35			36									
Y																									
Z																									

Firm/Agency, Address
INTERMOUNTAIN PROFESSIONAL SERVICES, INC.
 5801 OSAGE AVENUE
 CHEYENNE WY 82001

Telephone Number: (307) 632-3138

This corner record was prepared by me or under my direction and supervision.
SEAL & SIGNATURE



Corner Name: 1/4 CORNER 31 & 32 Section: T. 16N R. 60W P.M. Cross-Index No.: X-5